

Draft

TIMELINE OF CHANGES

- Elementary**
1. Radiant Elementary Opens in 19/20
 2. Elementary #10 opens in 22/23
- High School**
1. New High School opens 21/22

Waukee Community School District: Feeder Option 1

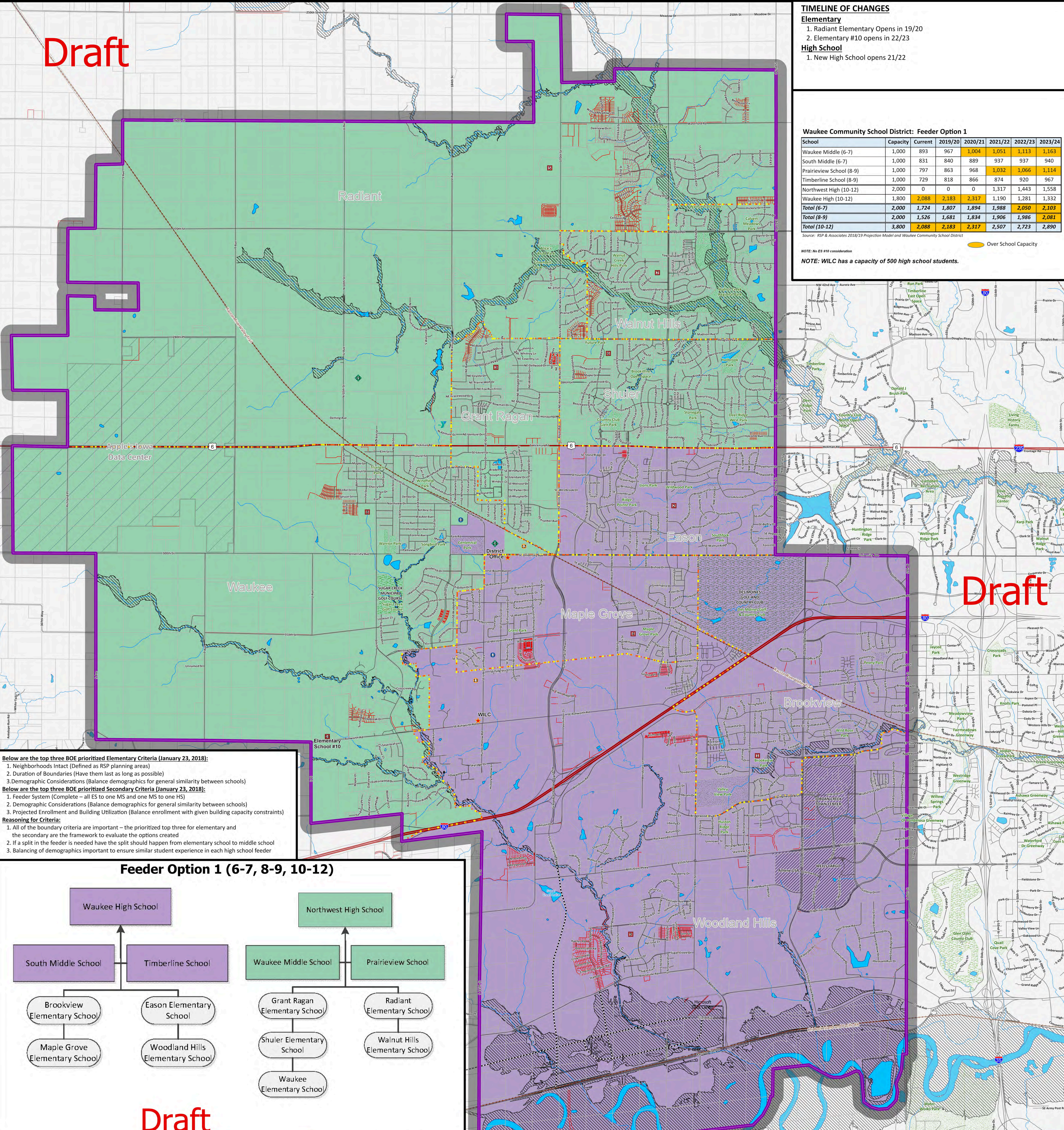
School	Capacity	Current	2019/20	2020/21	2021/22	2022/23	2023/24
Waukee Middle (6-7)	1,000	893	967	1,004	1,051	1,113	1,163
South Middle (6-7)	1,000	831	840	889	937	937	940
Prairieview School (8-9)	1,000	797	863	968	1,032	1,066	1,114
Timberline School (8-9)	1,000	729	818	866	874	920	967
Northwest High (10-12)	2,000	0	0	0	1,317	1,443	1,558
Waukee High (10-12)	1,800	2,088	2,183	2,317	1,190	1,281	1,332
Total (6-7)	2,000	1,724	1,807	1,894	1,988	2,050	2,103
Total (8-9)	2,000	1,526	1,681	1,834	1,906	1,986	2,081
Total (10-12)	3,800	2,088	2,183	2,317	2,507	2,723	2,890

Source: RSP & Associates 2018/19 Projection Model and Waukee Community School District

NOTE: No ES #10 consideration

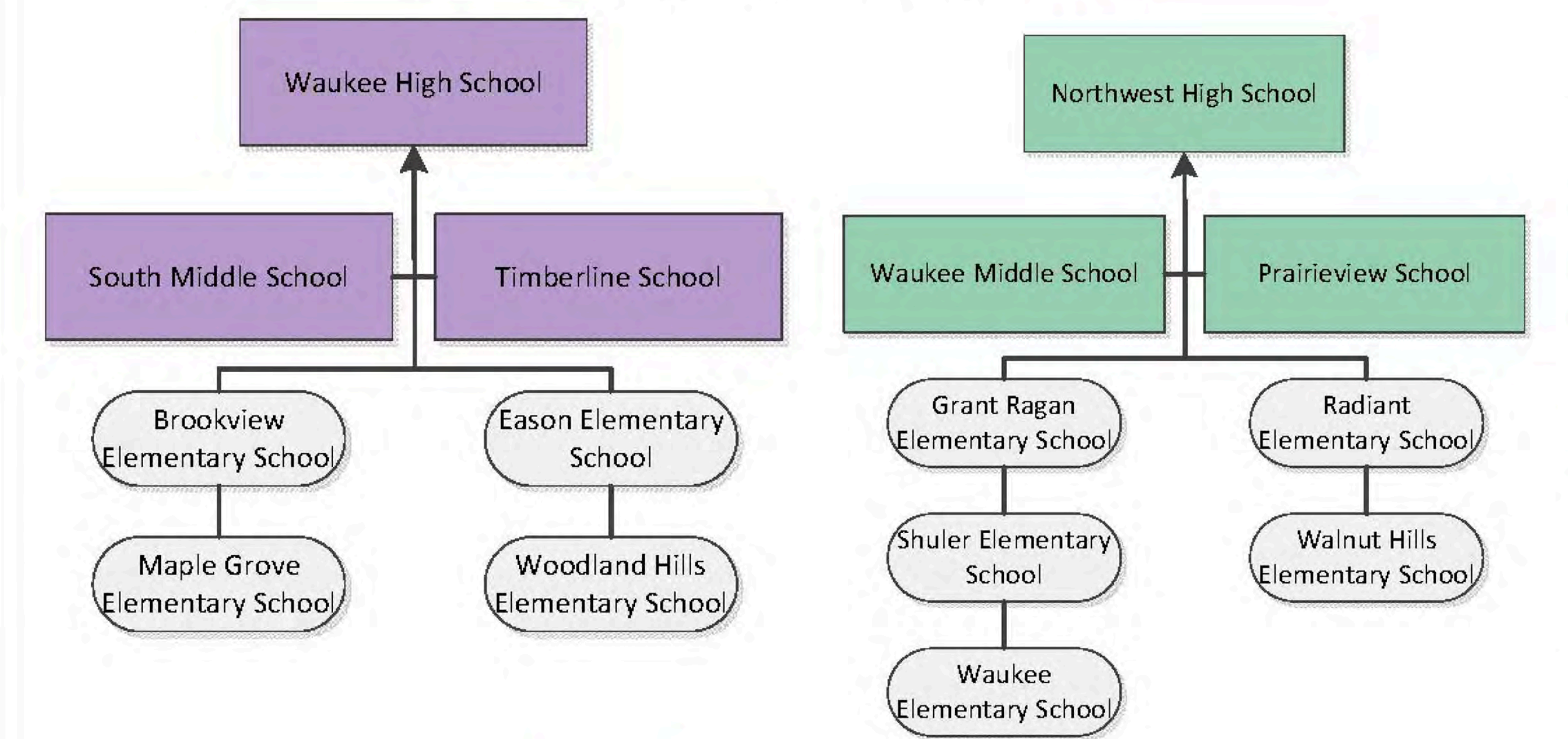
NOTE: WILC has a capacity of 500 high school students.

Draft



- Below are the top three BOE prioritized Elementary Criteria (January 23, 2018):**
1. Neighborhoods Intact (Defined as RSP planning areas)
 2. Duration of Boundaries (Have them last as long as possible)
 3. Demographic Considerations (Balance demographics for general similarity between schools)
- Below are the top three BOE prioritized Secondary Criteria (January 23, 2018):**
1. Feeder System (Complete – all ES to one MS and one MS to one HS)
 2. Demographic Considerations (Balance demographics for general similarity between schools)
 3. Projected Enrollment and Building Utilization (Balance enrollment with given building capacity constraints)
- Reasoning for Criteria:**
1. All of the boundary criteria are important – the prioritized top three for elementary and the secondary are the framework to evaluate the options created
 2. If a split in the feeder is needed have the split should happen from elementary school to middle school
 3. Balancing of demographics important to ensure similar student experience in each high school feeder

Feeder Option 1 (6-7, 8-9, 10-12)



Draft

Map Data provided by Waukee Community School District, Polk County, Dallas County, USGS, Iowa DOT, and ESRI. Map created June 10th 2019.

Legend:

- 100 Year Floodplain Boundary
- Microsoft Data Center
- Elementary Schools
- Middle Schools (6-7)
- Grade Centers (8-9)
- High Schools
- District Office
- District Boundary
- Cemetery
- Golf Courses
- Parks
- Other
- June 2018 New Parcels
- 2016 Parcels
- Apple's Data Center
- 19/20 BOE Approved Elementary Boundary
- Future Roads